

PART OF S.E. 1/4
SECTION 32 T.7N.,R.2W., S.L.B.&M.

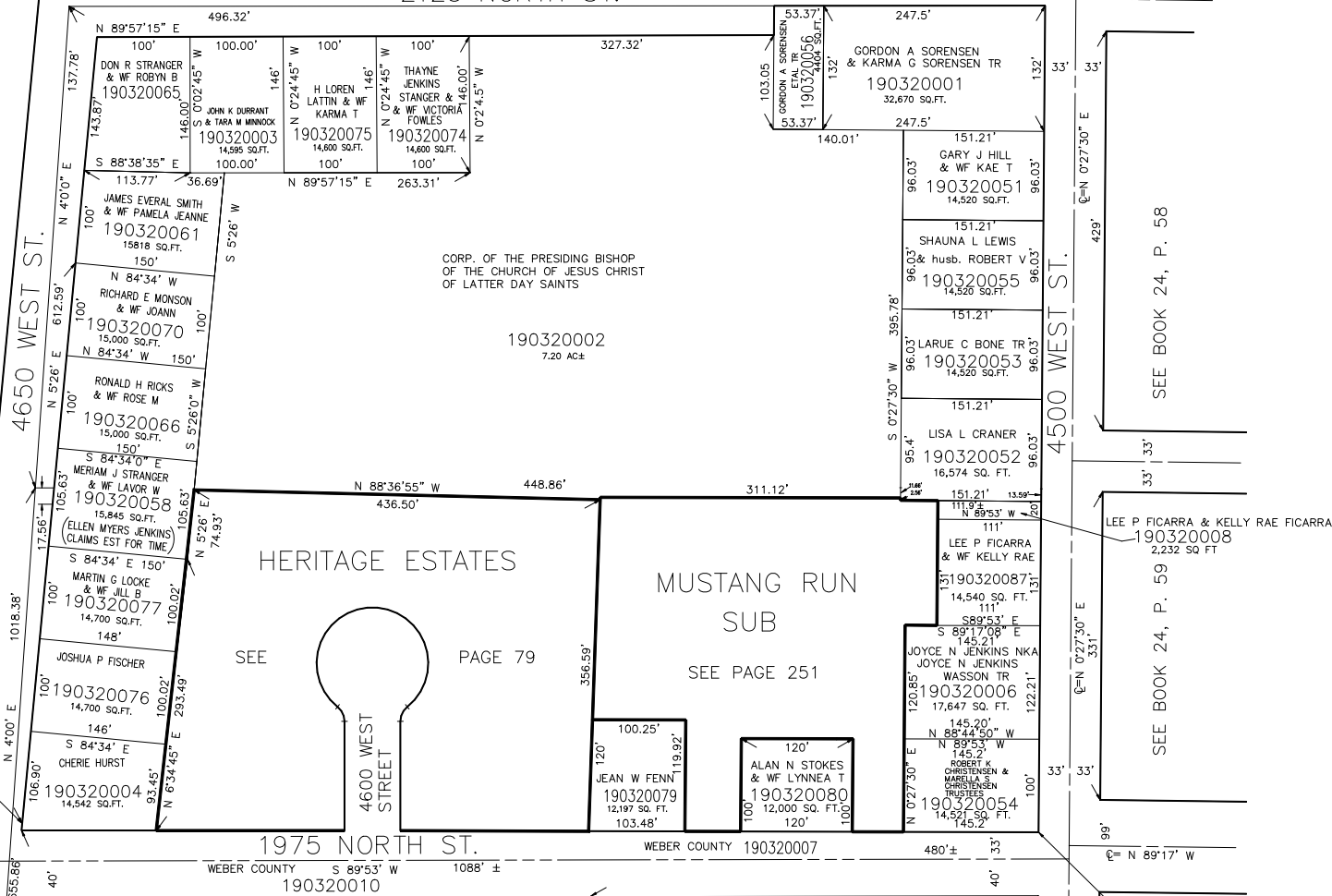
IN PLAIN CITY
SCALE 1" = 100'

TAXING UNIT: 21

PREFIX : 19-032

SEE P. 32-1

2125 NORTH ST.



CORP. OF THE PRESIDING BISHOP
OF THE CHURCH OF JESUS CHRIST
OF LATTER DAY SAINTS

190320002
7.20 AC±

HERITAGE ESTATES

MUSTANG RUN
SUB

SEE P. 33

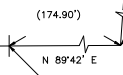
SEE BOOK 24, P. 58

SEE BOOK 24, P. 59

SEE P. 32

W.1320' N.6369'
E.4.18FT FROM THE S.E. COR.
OF S.E.1/4 OF SEC.32.

(S89°54'20"E
7.43')



S.W. COR. OF S.E.1/4 OF SEC.32, T.7N., R.2W.